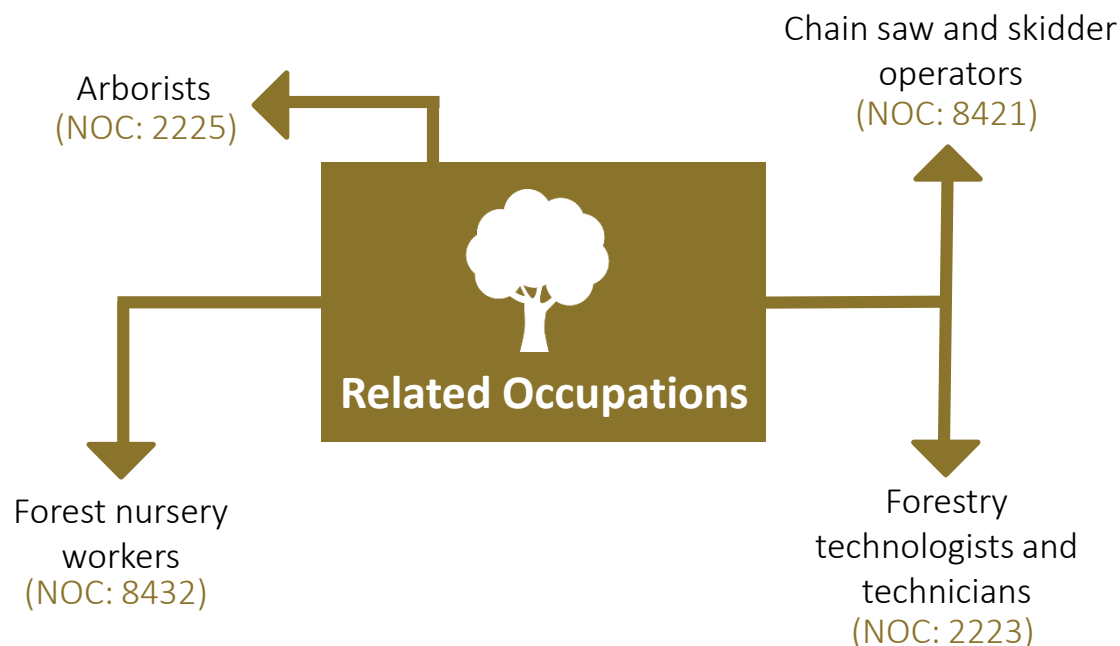


SILVICULTURE AND FORESTRY WORKERS (NOC: 8422)



Silviculture and forestry workers perform a variety of duties related to reforestation and to the management, improvement and conservation of forest lands. They are employed by logging companies, contractors and government services.

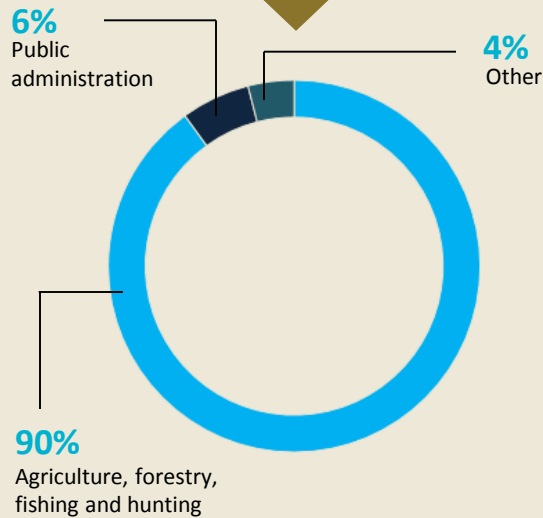


Completion of a **college** or **other specialized program** for silviculture workers or forestry crew workers may be required.



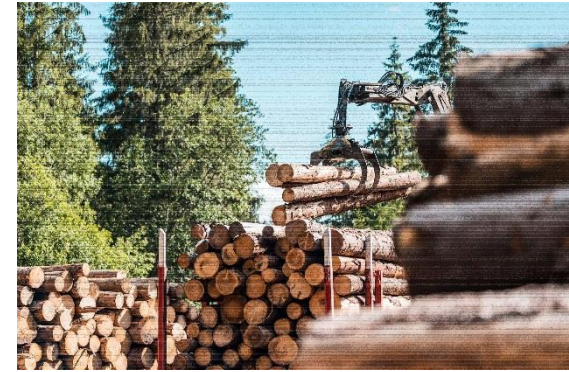
Work Prospects (2018 - 2020): **Fair**

Employment by Industry



Examples of duties performed

- Assess site, select seedlings and plant trees using manual planting tools in reforestation areas
- Operate power thinning saw to thin and space trees in reforestation areas
- Operate chain saw to thin young forest stands
- Control weeds and undergrowth in regenerating forest stands using manual tools and chemicals
- Complete firefighting reports and maintain firefighting equipment
- Dig trenches, cut trees, pump water on burning areas to fight forest fires under direction of fire suppression officer or forestry technician.



Sample Job Titles

Silviculture worker
Piecemaker – silviculture
Forest firefighter

127

Job Openings
2017-2026

\$20.00

Median
Wage
(per hour)



Funded by the Government of Canada and the Province of New Brunswick through the Canada-New Brunswick Labour Market Agreements.

NBjobs.ca