

SOCIAL AND COMMUNITY SERVICE WORKERS (NOC: 4212)



Social and community service workers administer and implement a variety of social assistance programs and community services, and assist clients to deal with personal and social problems. They are employed by social service and government agencies, mental health agencies, group homes, shelters, substance abuse centers, school boards, correctional facilities and other establishments.

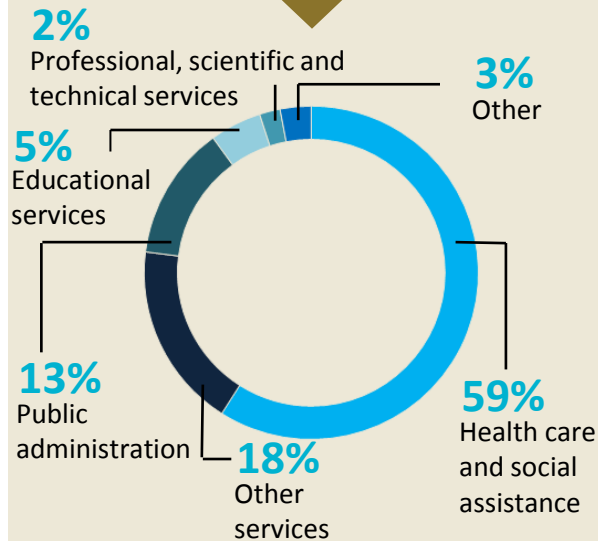


Completion of a **college** or **university program** in social work, child and youth care, psychology or other social science or health-related discipline is usually required.

Work Prospects
(2018- 2020): **Fair**



Employment by Industry



Examples of duties performed

- Review client background information, interview clients to obtain case history and prepare intake reports.
- Assist clients to sort out options and develop plans of action while providing necessary support and assistance.
- Assess clients' relevant skill strengths and needs.
- Assess and investigate eligibility for social benefits
- Refer clients to other social services or assist clients in locating and utilizing community resources including legal, medical and financial assistance, housing, employment, transportation, day care and other services.



Sample Job Titles

Youth worker
Addictions worker
Life skills instructor

945

Job Openings
2017-2026

\$15

Average
Wage
(per hour)



Funded by the Government of Canada and the Province of New Brunswick through the Canada-New Brunswick Labour Market Agreements.

NBjobs.ca