

# NEW BRUNSWICK LABOUR MARKET OUTLOOK 2025 to 2034

## Forecasted Job Openings

**136,300**

Job Openings  
over the next 10 years

**31,400 (23%)**

From Expansion

**105,000 (77%)**

From Retirements/Deaths

## Who Will Fill These Openings?

### OTHER SOURCES

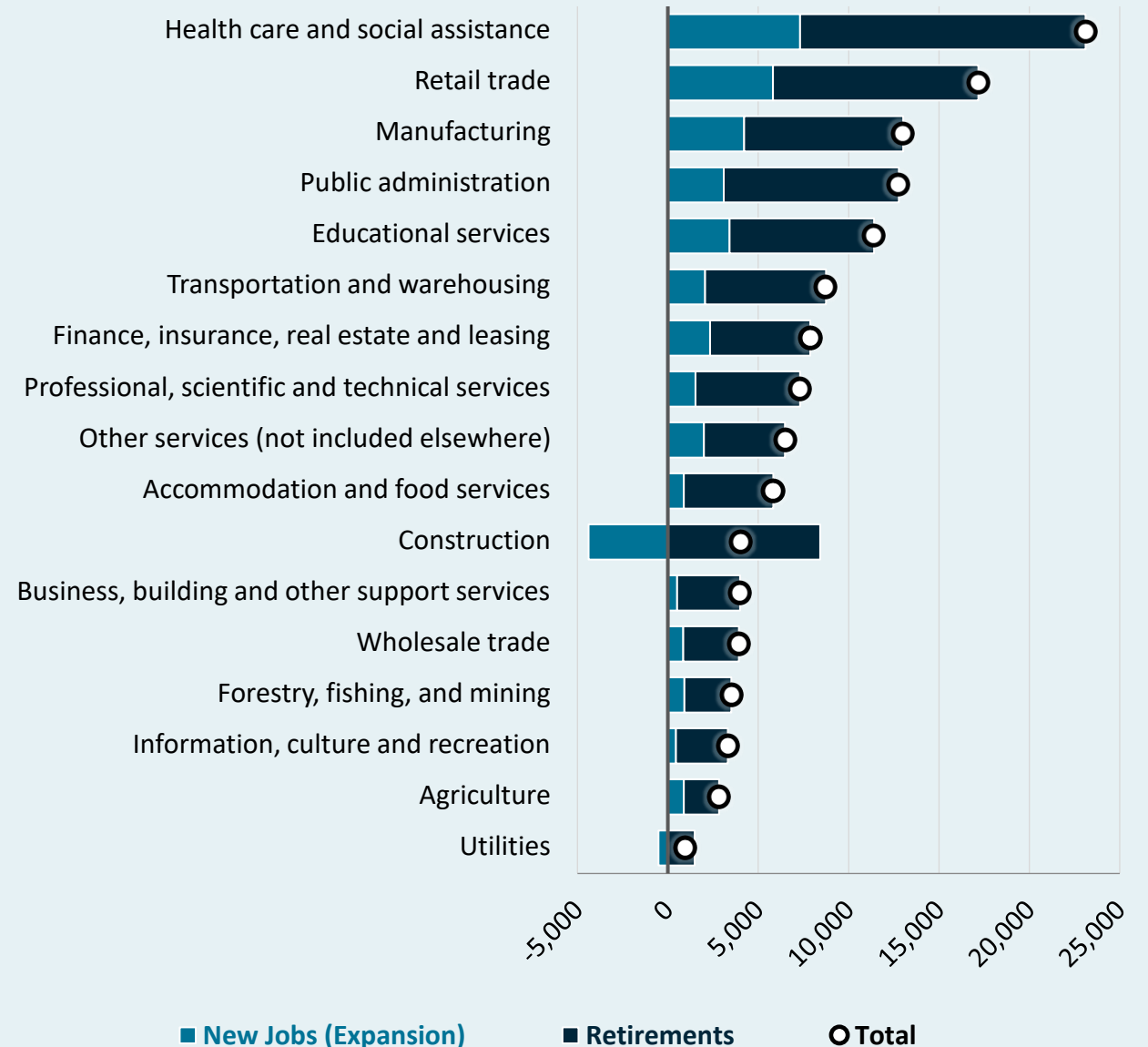
**54,100 (40%)**

- OTHER COUNTRIES
- OTHER PROVINCES
- INDIVIDUALS NOT IN THE WORKFORCE

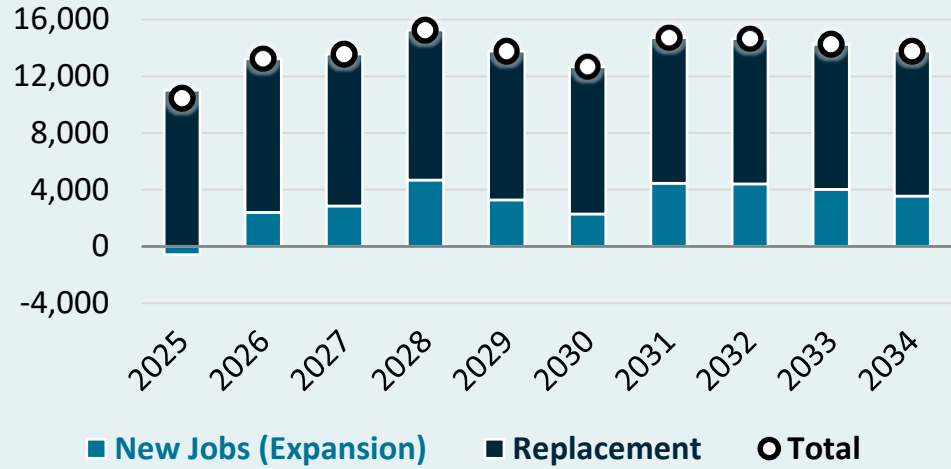


**YOUTH**  
**82,300 (60%)**

## Job Openings by Sector

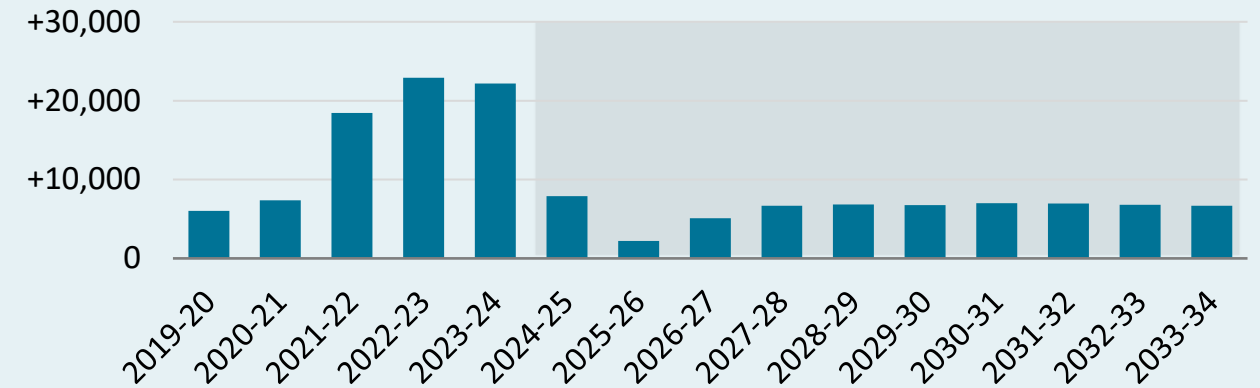


## Job Openings by Year

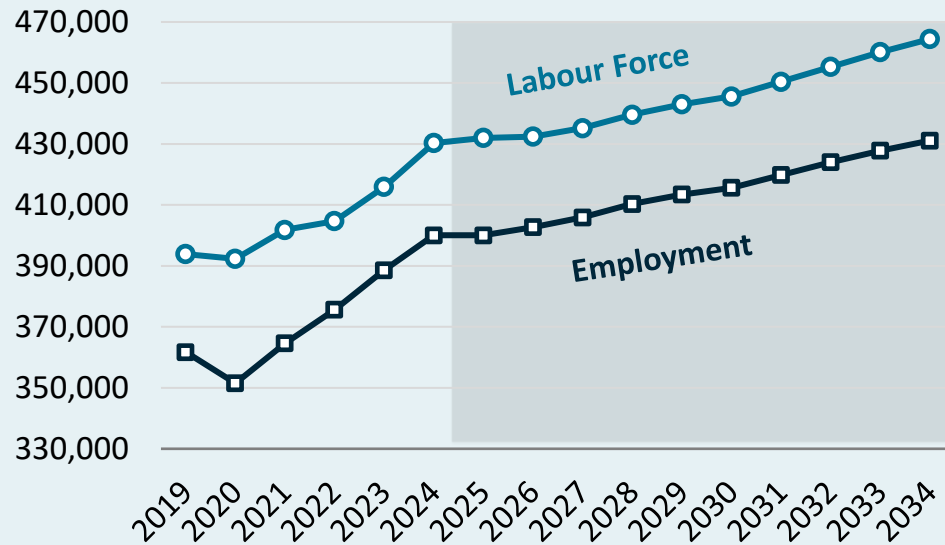


## Population Growth

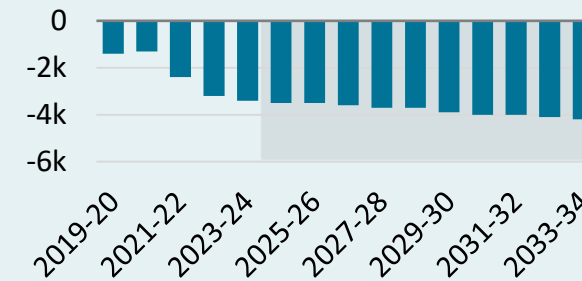
### Total Population Change



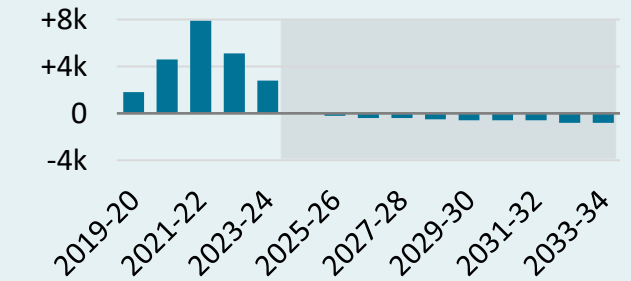
## Labour Force and Employment



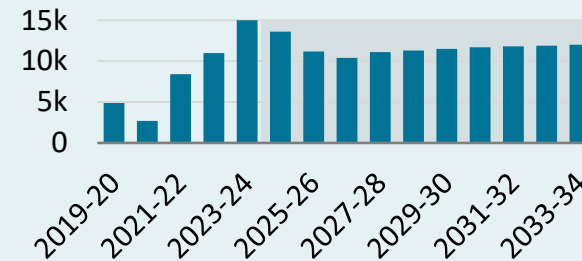
### Natural Change (Births Minus Deaths)



### Interprovincial (Net)



### Immigration



### Temporary Residents (Net Change)

